



X



SAY THEIR NAMES

INSTALLATION

ASHLAND, OREGON

CONCEPT DESIGN

11 JUNE, 2021

CONTACT

Jerryck "JRoc" Murrey

+ 1 541 282 4240

info@jrocart.com

MISCELLANEOUS Office for Architecture

+1 619 431 1729

tony@misc-oa.com
david@misc-oa.com

Jerryck "JRoc" Murrey

ABOUT

Born in Oakland California and raised in multiple cities across America, Jroc is an American mixed media artist residing in Southern Oregon. Incorporating elements of street art, spray paint, wheatpaste, stencil, newspaper, and paint, his art illustrates the paradigm of inner city living from around the world. Heavily influenced by comic book art and scripting, Jroc's use of bright colors and bold outlines highlights the dynamic nature of the hero journey. By working on large format wood panels, sculpture, paper and canvas he aims to captivate the viewer through scale moving the audience to a readily present, but often overlooked reality.

THOUGHTS FROM THE ARTIST

As a child I found beauty in the process of everyday living - children playing around fire hydrants in summer, the elders in the community sitting on stoops, chasing the ice cream truck down the street. Though cognizant of the limited resources, it was never dwelled upon, and therefore our happiness was largely preserved. As I grew, eventually playing division one sports, and professionally in Europe, I saw that most lower income neighborhoods were similar to that of my childhood. I want my art to convey the richness of life in these areas while underscoring the obstacles many continue to face. Taking inspiration from urban neighborhoods in Cuba, Jamaica, Western Africa and America, I use symbols, images and color to tell the story of those that the Mainstream may never meet.



JRoc



MISCELLANEOUS Office for Architecture

ABOUT

Founded by David Garcia and Tony Salamone, MISCELLANEOUS is a collective of architects, artists, creators, and ideas within one multi-disciplinary design office based in San Diego, California. Tony was born in Ashland, Oregon and found his experience growing up in the Rogue Valley helped shape their response to context. These experiences enable them to create spaces that respect the environment and instill a spirit of place. They value the fundamental human activity of play to engage a wider audience through experimentation and guileless imagination. It remains their core belief that everyone deserves access to good design.



David



Tony



“Domino!”

VISION

The installation is to create a series of large-scale dominos oriented in a variety of positions serving as a focal point for community engagement and interaction.

The game of dominos has profound significance within modern Afro-American Black culture. It recalls moments of neighborhood BBQ's and community gatherings for jovial traditions around reunions and weddings. This intentionally contrasts with popular culture aphorism of “falling like dominos”. Moreover,

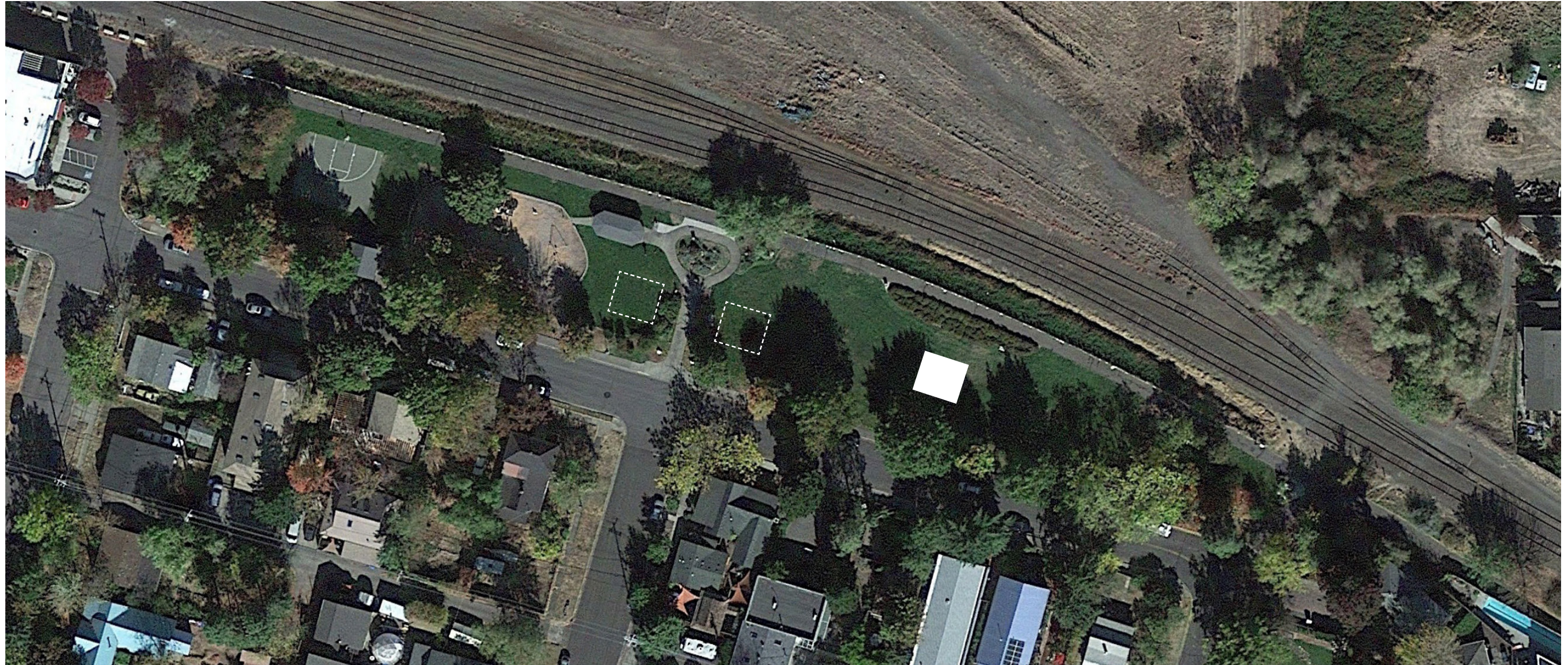
the domino placement provides a subtle echo to Stonehenge, further underscoring the disparity within the ancestral voyage to America.

These differences are made to illuminate the “lemon to lemonade” approach many Blacks have taken to their American experience. Lastly dominos allude to a chain reaction, or a foreshadowing of impending change. Through colors and posture, we intend to illustrate this change as being one of a positive nature; one here to stay.

PLAQUE DESCRIPTION

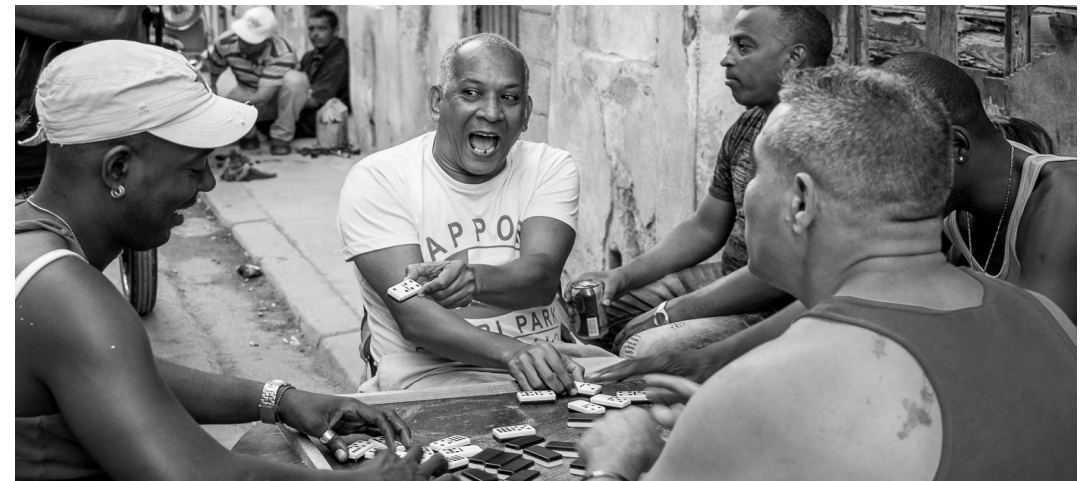
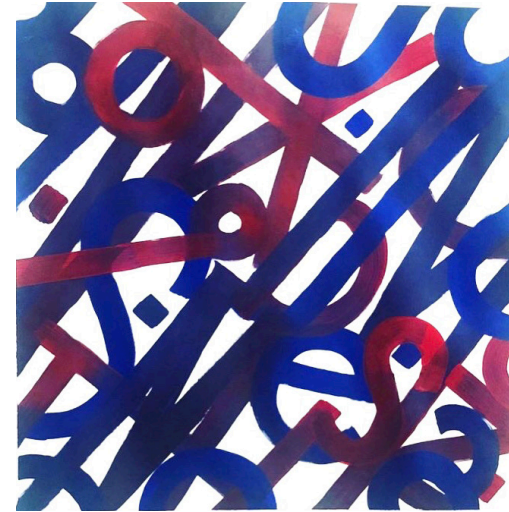
“Domino” celebrates the journey of Black Afro-American culture throughout American History and underscores the importance of those contributions despite systemic challenges. Further the work stands as a monument to sacrifices made by all people on the path to equality, while serving as a beacon to inspire future generations to forge ahead.

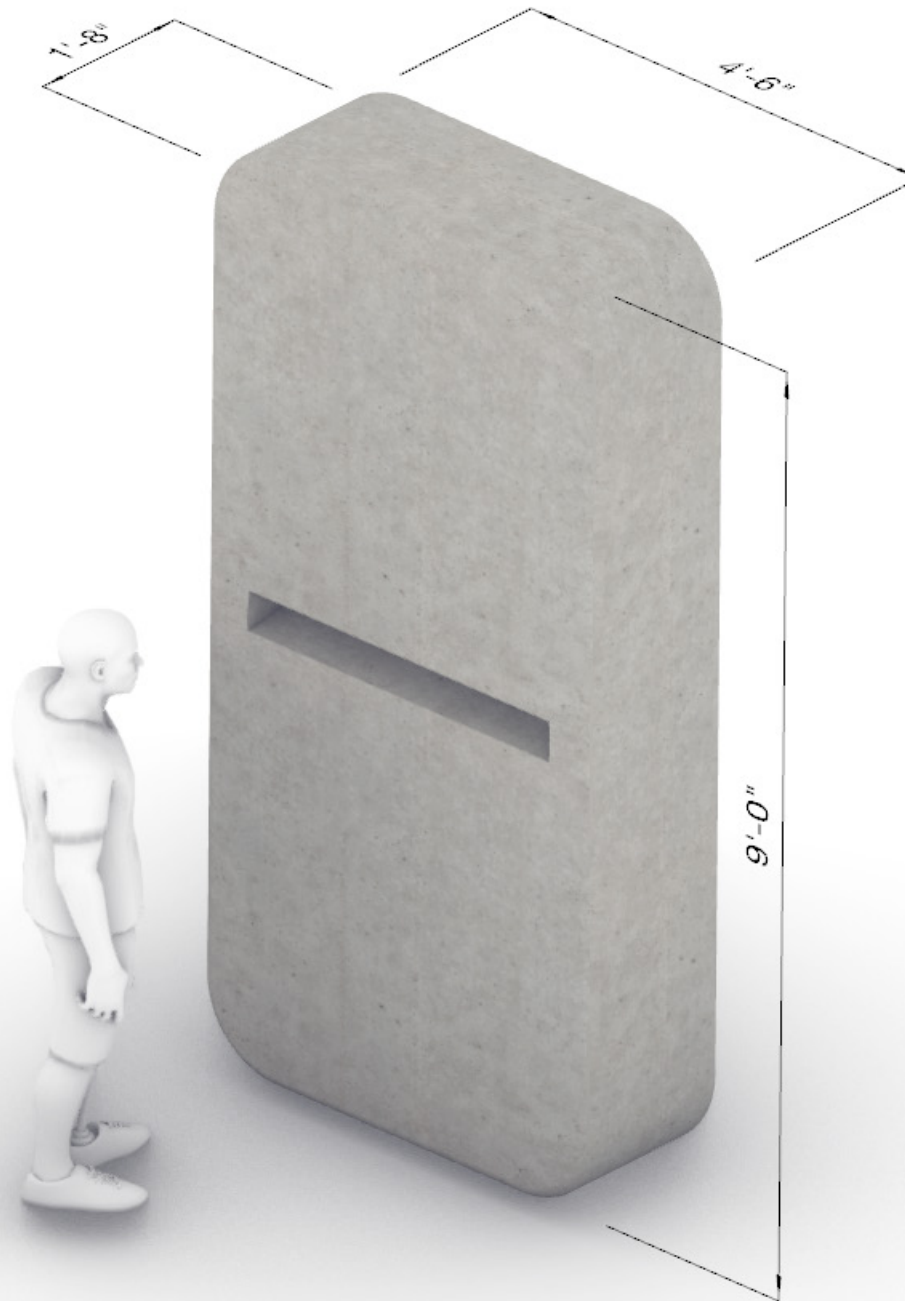




■ Primary Option (est. 1000sf)
□ Secondary Options







BUDGET

\$65,000

The Dominos would be constructed out of concrete. The process will consist of creating a formwork out of foam through 3D modeling and Computerized Numerical Control (CNC) machining. The center of the domino will be hollow with a reinforced rebar frame to strengthen the structure and reduce weight.

Pricing highly dependent on number and orientation of Dominos. Best efforts will be made to reduce budget to fit the scope and intent of initiative.







